



NEWS 'n VIEWS

THE SUNSHINE COAST ORCHID SOCIETY CALOUNDRA INC.

Postal address – 1 Cutler Court, Golden Beach 4551

Email:- caloundraorchidsociety@gmail.com

Web:- www.sunshinecoastorchidsocietycaloundra.com

Find us on Facebook

PATRON:	John Kemp
PRESIDENT:	Ray Graham 5493 5810
VICE-PRESIDENT:	Kath Morris
SECRETARY:	Mary Coffey 5437 3199, email caloundraorchidsociety@gmail.com
ASSISTANT SECRETARY:	Pauline Clayton
TREASURER:	Desley Hamilton
ASSISTANT TREASURER:	Graeme Lawer
COMMITTEE MEMBERS:	Mary Barber, Juanita Owen, Sandra Davis, Roy Voogt, Lauren Higgins
PUBLICITY OFFICER:	Pauline Clayton
PHOTOGRAPHER:	Lauren Higgins
EDITOR:	Mary Coffey
BUS TRIP ORGANISER:	Kath Morris 0408 545476 and Lauren Higgins 0410 135526
NEW GROWERS' CONVENER:	Ray Graham 5493 5810

VOL 49 No 6 MARCH 2026

BUSINESS MEETINGS: 1.30 pm - 2nd Wednesday of the month

Next Business Meeting: – 1.30 pm 8 April 2026 Venue:- Members homes

CULTURAL MEETINGS: Held at 1:30 pm on the third Saturday of every month except December (**No meeting in April this year**).

All meetings are in the CCSA Hall, Nutley Street, Caloundra (which is air conditioned).

Next Cultural Meeting: **1:00 for 1:30 Saturday 21 March 2026**

Plants must be tabled by 1.00 so that the Popular Vote can be done before the meeting starts.

Deadline for articles in the April edition is 28 March 2026.

President's Report

Hello everyone and I hope you're all doing well and the weather isn't too wet for you.

Well, another month has rolled by and our Annual Show is nearly here. Trying to get everything ready is proving to be its usual pain but then again, it's the same every year. Several changes this year are proving to be a challenge but that's life. What would it be without challenges.



Anyway, this Saturday, the 14th of March, I'll be holding another interested growers / newcomers' group so I hope a lot of you can attend. It will be at my place, the plumber has gone and everything is fine. (Thank Goodness!) A chair, and your good self, is all that's required. So, if you need info about growing orchids, ah, come anyway, there will be people who know what they are talking about so it should be a good day, they always are.

On that note I had better go and at least pretend to do something so I'll hopefully see most of you at my place on Saturday. Stay safe and dry and Bye for now!

Ray

RESULTS AT CULTURAL MEETING – FEBRUARY 2026

CLASS	POPULAR VOTE	JUDGES' AWARDS
<u>MASTERS SECTION</u>		
NATIVES 1	<i>Den. biggibbum</i> v. <i>compactum</i> Michael & Betty	<i>Den. biggibbum</i> v. <i>compactum</i> Michael & Betty
SPECIES 1	<i>Brs. nadosa</i> Robert	<i>Brs. nadosa</i> Robert
HYBRIDS CATTLEYA ALLIANCE 1	<i>Bc. Jenosa</i> x <i>Ctt. Topaz Exalt</i> x <i>C. Caudebec</i> Candy Michael & Betty	<i>C. Gerard Napper</i> Robert <i>Bc. Jenosa</i> x <i>Ctt. Topaz Exalt</i> x <i>C. Caudebec</i> Candy Michael & Betty
Equal 1	<i>Rlc. Paradise Supernova</i> Lyn	<i>C. Caudebec Candy 'Spots'</i> Frank & Julie
2	Tie x 3	
3	Tie x 2	
HYBRIDS DENDROBIUM ALLIANCE 1	<i>Den. Unknown</i> Frank & Julie <i>Den. Enobi Purple</i> Keith <i>Den. Unknown</i> Frank & Julie	<i>Den. Enobi Purple</i> Keith <i>Den. Unknown</i> Frank & Julie <i>Den. Unknown</i> Frank & Julie
HYBRIDS ANY OTHER GENERA 1	<i>Phrag. Sorcerer's Apprentice</i> Robert	<i>Phrag. Sorcerer's Apprentice</i> Robert
2	<i>Phrag. Pelseus Highclare</i> Robert	<i>Phrag. Pelseus Highclare</i> Robert
SPECIAL CLASS ONE 1	<i>Van. Rolin Violet</i> Michael & Betty	<i>Van. Rolin Violet</i> Michael & Betty
<u>OPEN SECTION</u>		
SPECIES 1	<i>Coel. magnum</i> Annette	<i>Coel. magnum</i> Annette
2	<i>Coel. cobbianum</i> Peter & Maree	<i>Coel. cobbianum</i> Peter & Maree
HYBRIDS CATTLEYA ALLIANCE 1	<i>Rlc. Siam Red</i> Mary Y	<i>Rlc. Siam Red</i> Mary Y
2	<i>Rlc. Deception Monarch</i> Annette	<i>Rlc. Deception Monarch</i> Annette
3	<i>C. Unknown</i> Rhonda	<i>C. Unknown</i> Rhonda
HYBRIDS DENDROBIUM ALLIANCE 1	<i>Den. Jade Junior</i> Annette	<i>Den. Jade Junior</i> Annette
2	<i>Den. Fraser's Sweet Stunner</i> Deniese	<i>Den. Fraser's Sweet Stunner</i> Deniese
HYBRIDS ANY OTHER GENERA 1	<i>Bulb. Meen Endless Love</i> Deniese	<i>Bulb. Meen Endless Love</i> Deniese
<u>NOVICE SECTION</u>		
HYBRIDS CATTLEYA ALLIANCE 1	<i>Cat. Unknown</i> Pauline	<i>Cat. Unknown</i> Pauline
HYBRIDS ANY OTHER GENERA 1	<i>Spathoglottis Unknown</i> Victoria	<i>Spathoglottis Unknown</i> Victoria
2	<i>Milt. Charles Fitch</i> Victoria	<i>Milt. Charles Fitch</i> Victoria
3	<i>Brs. Unknown</i> Victoria	<i>Brs. Unknown</i> Victoria

Judges for February – Ray and Robert

Thank you to Michael for Editing this page

Denotes genus or specific name corrected (* means wrong spelling)

Denotes name changed by Kew (Please change your label). **Denotes** no name as recorded but best guess

Denotes Not on the RHS Register of Orchid Hybrids or the Kew Monocot List.

Denotes. First letter changed, small letter = a **species**. Capital letter = Hybrid. If your plant is **highlighted** it is a good idea to change your label to show the correct name [which was probably changed after you acquired it]. It is very important to be accurate with the names – where possible – otherwise the incorrect names might never be rectified. Newer growers will have the wrong information and it will snowball from there. We like to publish the correct information



'MASTERS' PLANT OF THE MONTH – *Brs. nodosa* – Robert

←

'OPEN' PLANT OF THE MONTH – *C. Siam Red* – Mary Y

→



'NOVICE' PLANT OF THE MONTH – C. Unknown - Pauline



PHOTOS FROM THE FEBUARY MEETING



Den. biggibbum v. *compactum*



Rlc. Goldenzelle x *C. Maris Song*



C. Caudebec Candy Spots



Pot. Hsin Ying 'Pink Doll'



Cat. Intermedia 'Coerulea'



Cat. Loggicesii x *Schom. Lyonsii*



C. Gerard Wappoert



Bc. Jenosa



Ctt. Topaz Exalt x C. Caudebec Candy



Den. unknown



C. Caudebec Spots



Den. Unknown



Den. Enobi Purple



Ctsm. Jamie Lawson



Phrag. Perseus High Claire



Phrag. Sorcerer's Apprentice



Van. Van Rokin Violet



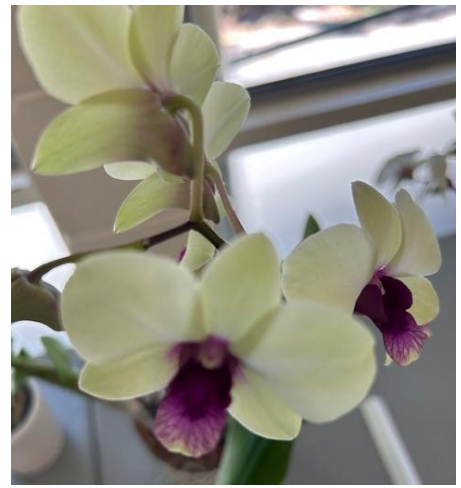
Coel. magnum



Coel. cobbianum



Den. Chao Praya Sweet x Dal's Stunner



Den. Jade Junior



R/c. Dal's Monarch x C. Dal's Choice



Ctt. Hazel Boyo



C. Unknown



Bulb. Meem Endless Love



Tillandsia Palacaeae



Milt. Charles M Fitch



Spathoglottis Unknown



Brs. Unknown



Keith was presented with an Award

A big thank you to our guest speaker Rocky Point, represented by Kim, who delivered a very informative and engaging presentation on their impressive range of products for orchids and the wider garden.

We learned that Rocky Point is a proud family-owned Australian business, located near Yatala, producing an extensive range of around 40 different products, including certified organic options suitable for both orchids and general gardening. It was fascinating to hear about the science behind their mixes and how choosing the right growing media can make such a difference to plant health and performance.

Many members were pleased to discover that Rocky Point products are easy to find locally, including at I Landscape and Steps Garden Centre — making it simple to try some of the products discussed during the talk.

Thank you, Kim, for sharing your knowledge and helping us all grow better orchids and healthier gardens. And thank you to everyone who attended and contributed to another warm and welcoming club meeting.



Dendrobium Beetles

Keep an eye out for the Dendrobium beetle larva and adults, they can do a great deal of damage to your leaves in a very short period of time.

The Dendrobium beetle's life cycle involves four stages (egg, larva, pupa, adult) over a few months, devastating orchids by adults feeding on leaves and laying eggs in new shoots, which hatch into grubs that tunnel inside, causing collapse, before pupating in a foamy chamber and emerging as orange and black beetles.



Eggs

Female beetles lay tiny, cream-coloured eggs in the leaf axils or soft new growth of orchids

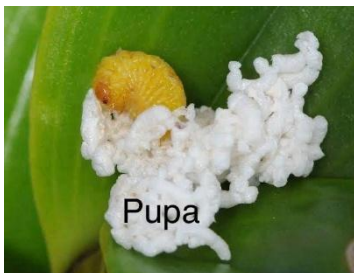


Larvae (Grubs)

Eggs hatch into off-white, maggot-like larvae with black heads.

They tunnel into and devour the inside of new shoots, buds and stems, leaving only veins (skeletonization).

This internal feeding causes the affected parts to become soggy, yellow and collapse.



Pupa

Once fully grown, the larva forms a protective, Styrofoam-like, waxy chamber (pupal chamber).

Pupation occurs within this chamber, often at the base of the cane or among surface roots.



Adult Beetle

The dazzling orange and black adult beetle emerges, about 10-12mm long, with black spots or stripes and large antennae.

Adults feed on leaves, flowers and buds, often appearing in pairs.

They reproduce during the warmer months, with the whole cycle completing in just a couple of months.



Reproduced from Toowoomba Orchid Society Facebook page.

We are closing our Post Office Box (PO Box 279, Caloundra) so, in future all (snail) mail is to be addressed to 1 Cutler Court, Golden Beach 4551

BUY – SWAP – SELL

We have set up a table at our Cultural Meetings for members to use as a 'Buy-Swap-Sell' Station.

The idea is if you have an excess of certain plants, bring them in, to sell or swap - and buy or swap with other members, plants that you would like to own.

* 'Member to member sales of this nature do not attract any additional Society Fees.....'

* By-Law 18 of the constitution.

Cultural Meeting Roster for Afternoon Tea

Mar	Annette, Anne N and Fay
Apr	No meeting
May	Juliet & Juanita

A Little reminder!

If you are paying the Society for bark, Christmas lunch, shirts, subscriptions, bus trips, etc. please remember we changed our bank account a few months ago, we no longer use the BOQ as our preferred bank. The correct details for payments are:

Heritage Bank BSB – 638 060

Account number – 16792548

Account Name – Sunshine Coast Orchid Society Caloundra

And don't forget to identify yourself and the purpose of any deposit when making a transfer.

Secretary's Snippets

- **Show** – thank you everyone who have put down your names for the jobs at the April Show. We still seriously need a provedore/chief kitchen person. We have a detailed written procedure for this job and the volunteer will have a lot of assistance from the other members. If you think you're up to it please put your hand up. It's such an important part of our show.
- There are also a handful of vacancies for selling raffle tickets and at the admission desk, we're also a bit short on the plant sales tables. If you can spare a couple of hours on those two days (Friday and Saturday 17 and 18 April) please let me know.
- Showing Orchids and Foliage – Keith and Rosemary have to know the names of the plants you will be showing no later than the Saturday before the show (11 April). They provide the uniform labels to attach to show plants. Their email address is gowlett@westnet.com.au

As usual, the minutes of the Business Meeting and full financial report will be available at the Cultural Meeting on Saturday 21 March 2026

SCOSC INC CALENDAR OF EVENTS FOR 2026

(Subject to additions and changes when necessary – shows highlighted are ones in which we participate {with a display where appropriate})

MARCH 2026

<i>Saturday 14</i>	<i>Interested Growers Group Meeting</i>	<i>Ray's Place. 9.30 am</i>
<i>Saturday 21</i>	<i>Cultural Meeting</i>	<i>CCSA Hall, Nutley Street</i>
<i>Saturday 21</i>	<i>Maroochydore (Closed) Show</i>	<i>Buderim</i>
<i>Saturday 21</i> <i>Sunday 22</i>	<i>Rockhampton Show</i>	<i>Robert Schwarten Pavillion</i>
<i>Saturday 21</i> <i>Sunday 22</i>	<i>EDOS OS Show</i>	

APRIL 2026

<i>Friday 3</i> <i>Saturday 4</i>	<i>Gladstone OS Show (Set up 2nd)</i>	
--------------------------------------	--	--

Saturday 11	Glasshouse Country OS (Closed) Show	Glasshouse Community Hall
Friday 17 Saturday 18	Sunshine Coast Orchid Society Autumn Show (set up 16th)	Uniting Church Hall, Cnr Ulm and Queen Streets Caloundra
<i>Friday 17 Saturday 18</i>	<i>Childers/Isis OS Autumn Show (Set up 16th)</i>	CANCELLED

MAY 2026

Saturday 2 Sunday 3	Gympie OS Show	Indoor Bowls Club Hall
Saturday 9	Interested Growers Group Meeting	Red Fox Nursery
Friday 8 Saturday 9	Noosa OS (Closed) Show	
Saturday 9	Maroochydore OS (Closed) Show	Bli Bli
<i>Friday 8 to Sunday 10</i>	<i>Bundaberg OS Show (set up 7th)</i>	<i>Bundaberg Recreational Precinct Pavillion, University Drive, Branyan</i>
<i>Saturday 16</i>	<i>Cultural Meeting</i>	<i>CCSA Hall, Nutley Street</i>

JUNE 2026

<i>Saturday 13</i>	<i>Cultural Meeting</i>	<i>CCSA Hall, Nutley Street</i>
Saturday 20	Gympie OS (Closed) Show	Indoor Bowls Club Hall Graham St

JULY 2026

<i>Saturday 18</i>	<i>Cultural Meeting</i>	<i>CCSA Hall, Nutley Street</i>
Friday 17 Saturday 18	Caboolture OS Show (Set up 16th)	

AUGUST 2026

Saturday 1 Sunday 2	Port Curtis OS Show and STOCQ Meeting	
Friday 14 Saturday 15	Maroochydore OS Show (Benching 13th)	Buderim
<i>Saturday 15</i>	<i>Cultural Meeting</i>	<i>CCSA Hall, Nutley Street</i>
<i>Friday 28 Saturday 29</i>	<i>Childers/Isis Spring Show (set up 27th)</i>	

SEPTEMBER 2026

Friday 4 Saturday 5	Nambour OS Show (set up 3rd)	Uniting Church Hall
<i>Thursday 10 to Saturday 12</i>	<i>Maryborough OS Show (Set up 9th)</i>	
Friday 18 Saturday 19	Noosa OS show (Set up 17th)	
<i>Saturday 19</i>	<i>Cultural Meeting</i>	<i>CCSA Hall, Nutley Street</i>
Friday 25 Saturday 26	Glasshouse Country OS Show (Set up 24th)	
<i>Friday 25 to Sunday 27</i>	<i>Hervey Bay OS Show (set up 24th)</i>	<i>Xavier College</i>
<i>Saturday 26 Sunday 27</i>	<i>Rockhampton OS Show</i>	<i>Rober Schwarten Pavillion</i>

OCTOBER 2026

Friday 9 Saturday 10	Bribie Island OS Show (Set up 8th)	
<i>Saturday 17</i>	<i>Cultural Meeting</i>	<i>CCSA Hall, Nutley Street</i>

NOVEMBER 2026

Saturday 14	Nambour Species Show (Set up 13th)	Buderim Hall
<i>Saturday 21</i>	<i>Cultural Meeting</i>	<i>CCSA Hall, Nutley Street</i>
Saturday 21	STOCQ Meeting	Glasshouse Hall
Saturday 28	Christmas Lunch	CCSA Hall

Orchids in April 2026
Uniting Church Hall, Cnr Queen and Ulm Streets

Preparations for our Autumn Show are now in full swing. Shows are a lot of work and a lot of fun – they are a great time for us to socialise and get to know one another better, so we encourage all our members to get involved as much as you can.

Details of the show are:

- **Dates** - Thursday 16th (setup & judging day), Friday 17 and Saturday 18 April – open to the public.
- **Set up tables etc** – 9am Thursday 16th
- **Clean up** after the 2.00pm presentation on Saturday 18th
- **Plants for the display** need to be at the hall between 10 and 2 Thursday 16th – These must be checked for Fire Ants. Declarations for the absence of Fire Ants are to be signed when bringing in plants.
- **Tags** for the sale plants are available on request. Please let me know how many you need. You may have some left over from previous shows and can use them also.
- As for last year, morning and afternoon teas and cups of tea or coffee will be free to all volunteers, soft drinks \$2, (Any member who is there working **all** day will not be charged for lunch).
- **Novice table** - All novices are encouraged to bring plants along even if they think the plant is not good enough. You may be surprised to find it's a winner!

It is time for all our members to think of ways you may be able to help make this show a success. Maybe you could assist in the following areas:

GENERAL (Members responsible – Ray Graham and Keith Gowlett)

- Set up the hall Thursday morning from 9 am
- Clean up Saturday afternoon etc.
- Organise signage

PLANT SALES (Member responsible – Michael Pye)

- Bring as many small boxes as possible for plant sales.
- Help sell the plants and re-stock tables – please note the plants will be arranged in the plant sales area by Genera, not ownership. Any plant with pests or disease will not be permitted for sale and the plants for sale must be established. If you're not sure, bring your plants anyway for clarification. It is essential that all pots are checked for Fire Ants. There will be declarations to be signed by everyone bringing in plants in pots.

CATERING (Members responsible – TBA)

- Prepare food (eg. creating sandwiches, serving, etc.)
- Clearing tables and washing up.

ADMISSION / RAFFLES (Member responsible – Mary Coffey)

- Sell raffle tickets or admission tickets
- Welcome bus groups

ORCHIDS IN SHOW AREA (Member responsible – Keith Gowlett)

- Be available to answer queries and watch the plants

ADMINISTRATION (Member responsible Rosemary Gowlett)

- Assist with secretarial work Thursday night & Friday – entering data into database, cutting out prize cards, collecting and receipting money from sales areas, etc.

PHOTOGRAPHIC COMPETITION (Member responsible – Roy Voogt)

- **Rules for Orchid Photographic Competition :**
 - Photos must be of orchids
 - Class – Colour or Monochrome
 - Prints may be Gloss, Matt or Pearl
 - The maximum size of the print to be A4 (210 X297mm). They may be smaller
 - The photograph must be mounted on a backing card and may have up to a 70mm matt border
 - The subject name should be on the bottom corner of the matt border. In the case of no matt border, it should be fixed to the print. It should be legible but not obtrusive and should not be embedded in the Image
 - The owner of the entry must be the photographer
 - The owner's name and phone number must be fixed to the back of the entry
 - Entries must be presented to the show secretary or show official no less than one hour before the judging of the show – the judging will take place at 6 pm. *All you snappers – get your cameras out and start clicking.*

Rosters for each day have been prepared so please consider adding your name to the rosters which will be available at the February and March meetings or by contacting Mary on 0407 651678 or email caloundraorchidsociety@gmail.com. Experienced members will be very happy to help newer members learn what to do – just come and join our band of merry workers. *On a day, closer to the show, Mary will contact those people who have put their names down to remind them what they volunteered to do!* Also, don't forget that plant labels are available from Keith and Rosemary closer to the day when you know which plants you can show. If you are planning to show a plant, please let Rosemary and Keith know along with the plant name(s). Email - gowlett@westnet.com.au
 Copies of the Schedule along with general conditions and definitions will be emailed. Members should make themselves familiar with the Conditions and Definitions before entering plants in the show.
 Mary – for the Show Committee



ROSI 2026 Autumn Show
 Saturday 21st March Open 8am - Close 4pm
 Sunday 22nd March Open 8am - Close 2pm

Spectacular Orchid Display
 Members Orchid & Foliage Sales
 Alice's Orchids - M&S Orchids
 Pacific Beach Orchids
 Foliage Plus (Paul Smith)
 Orchid Potting Supplies
 Rockhampton Cake Decorators
 Devonshire Teas
 Show raffle: Garden cart full of goodies
 Door Prize: A Beautiful Orchid - Entry \$5 Children Free

Robert Schwarten Pavilion
 Rockhampton Showgrounds



Eastern District Orchid Society Inc

Founded 1966
 www.edos.org.au
 Email: info@edos.org.au
 Visit us on Facebook

60th Autumn Show
21 & 22 March 2026
 Saturday 8.30 am to 4.00 pm
 Sunday 8.30 am to 2.00 pm

Brisbane International Shooting Centre
 Belmont Shooting Complex
 1485 Old Cleveland Road, Belmont
 (Entry off Old Cleveland Road)

An amazing display of flowering orchids on show
 Thousands of plants for Sale (EFTPOS available)
 Free advice from experienced Growers
 Orchard Growing Accessories for Sale
 Craft & Floral arrangements for Sale
 Refreshments Available
 Plenty of Parking
 Entry Fee Adults \$4.00
 Children Under 14 years Free



Redcliffe District Orchid Society Inc.
Autumn Show 2026

Webb Hall, Redcliffe Show Grounds

- 17th April 8.30 am – 3.00pm
- 18th April 8.30am – 3.00pm



- ❖ MASSIVE PLANT SALE.
- ❖ ORCHID GROWING SUPPLIES.
- ❖ REFRESHMENTS.
- ❖ POTTING DEMONSTRATIONS.
- ❖ CULTURAL INFO.
- ❖ AMPLE FREE PARKING.
- ❖ FANTASTIC RAFFLES.
- ❖ ENTRY \$5 – KIDS U16 FREE.

Our Partners



IPSWICH GARDEN SPECTACULAR

11th April 2026 8:30am – 3:00pm
 12th April 2026 9:00am – 1:00pm
 Ipswich Orchid Society Show & Sale
 Ipswich & Districts Bromeliad Society Sale
 Multiple other Vendors attending
 Variety of plants and products available
 Raffle tickets available
 Admission = \$5.00 Under 18's = FREE



Questions? Email us at ipswichorchidsociety@gmail.com





2026 GYMPIE ORCHID SHOW

Indoor Hall at 35 Graham Street

2nd and 3rd May 2026

Saturday: 8.00am – 4.00pm
Sunday: 8.00am – 2.00pm

- Huge display of benched Show Orchids & Foliage plants
- Multiple Vendors for sale plants & accessories
- Refreshments
- Expert Advice
- Raffle prizes (\$1 a ticket)
- Accessible to all

 **Admission**
 Adults - \$4 each
 Children under 12 Free

Web: www.Gympieorchidsociety.com
Facebook: Gympie & District Orchid Society Inc.

Phone President Gary Walker on 0407 640 516 for any questions



Glasshouse Country Orchid Society

Inaugural
2026 Autumn Closed Show

Saturday 11 April
Glasshouse Community Hall
 8 Coonowrin Road Glasshouse Mountains

Doors open 8am - 4pm
ONE DAY ONLY

- + Show Orchids & Displays
- + Plant Sales & Accessories
- + Refreshments

FREE ADMISSION
www.glasshouseorchids.com.au
 EFTPOS available



Glasshouse & Illawarra
News

I think my wife has started to show the first signs of dementia... She said she can't remember what she ever saw in me!

SARCASM LEAGUE

When I complained to Amazon about a missing parcel they asked me to send photographic evidence.



IF YOU'RE BUYING A WATCH FROM AMAZON, BE WARNED. I LEARNED THE HARD WAY THAT IF IT SAYS YOU CAN SWIM WITH IT, THIS ONLY APPLIES IF YOU CAN ALREADY SWIM WITHOUT IT.

I took my suit to the cleaners, who wanted to charge me \$15.00 So I gave my suit to the charity shop next door. They cleaned and pressed it and put it in the window. I bought it for \$4.50!

Please support our local sponsors and tell them you are from the Caloundra Orchid Club



Platinum orthodontics
transform your smile

Dr Gavin Lenz
BDSc (Qld), MDSc (Melb), FRACDS

Dr Emily Ong
BDSc (Hons) (Qld), DCCinDent (Qld)



Annerley
429 Ipswich Road
Annerley QLD 4103

Stafford
275 Stafford Road
Stafford QLD 4053

Mooloolaba
152 Robina Road
Mooloolaba QLD 4557

07 3848 5711

07 5444 1030




SAM THOMPSON
REAL ESTATE

APPRAISALS - SALES - RENTALS
0422 627 029
SAM.THOMPSON@IMAGEPROPERTY.COM.AU



DIAMOND MINE JEWELLERS
of Pelican Waters

- ◆ Designed and professionally handmade jewellery
- ◆ Repairs and remakes
- ◆ Onsite master jeweller for 48 years
- ◆ Manufacture and repairs all done on premises
- ◆ A trusted local family business

Something Special for that Special Someone

Shop 5 Pelican Waters Shopping Village
Pelican Waters
Phone: (07) 5492 4477
Email: thediamondmine3@gmail.com



THE SANCTUARY
CAFÉ AT ACRES



Local catering
that comes to you

Call Vicky on
0421 214 107
hello@sanctuaryatacres.com
www.thesanctuaryatacres.com.au

Interested in advertising in our newsletter?
Contact Mary Barber: 0404 266 665

**The locally owned hearing
clinic you can trust**

Hear4Good




**Hear4Good is a trusted local clinic with offices
in Caloundra and Golden Beach.**

**We are independent and quite unlike the foreign-
owned hearing aid shops.**

**If you or your loved ones have hearing problems,
we're here to help.**

Phone 5477 0144



We offer fully-funded services for pensioners and veterans.




Excessive Snoring?
Do you suffer from sleep apnea?

A home sleep study service for diagnosing SLEEP APNEA is now available from Pelican Waters Pharmacy.

- CPAP hire and trial of masks
- Easy payment plans for CPAP machines
- CPAP masks and spares available

pelican waters pharmacy 

Your friends in pharmacy

Pelican Waters Shopping Village,
Pelican Waters 4551
TEL: 5492 3455



SUNSHINE COAST
ORCHID SOCIETY
CALOUNDRA

PROUDLY PRESENTS

ORCHIDS IN APRIL 2026

CALOUNDRA UNITING CHURCH HALL

(Cnr Queen & Ulm Sts)

**Friday 17 April
9am - 4pm**

**Saturday 18 April
9am - 2pm**



RAFFLES!

EXPERT ADVICE

CANTEEN OPEN ALL DAY

ORCHIDS & PLANTS FOR SALE!

**PRESENTATION OF PRIZES
2pm Saturday**

ENQUIRIES CONTACT MARY 0407 651 678

**Entrance Fee:
Adults \$5
U12 free**

BUS TRIPS WELCOME!